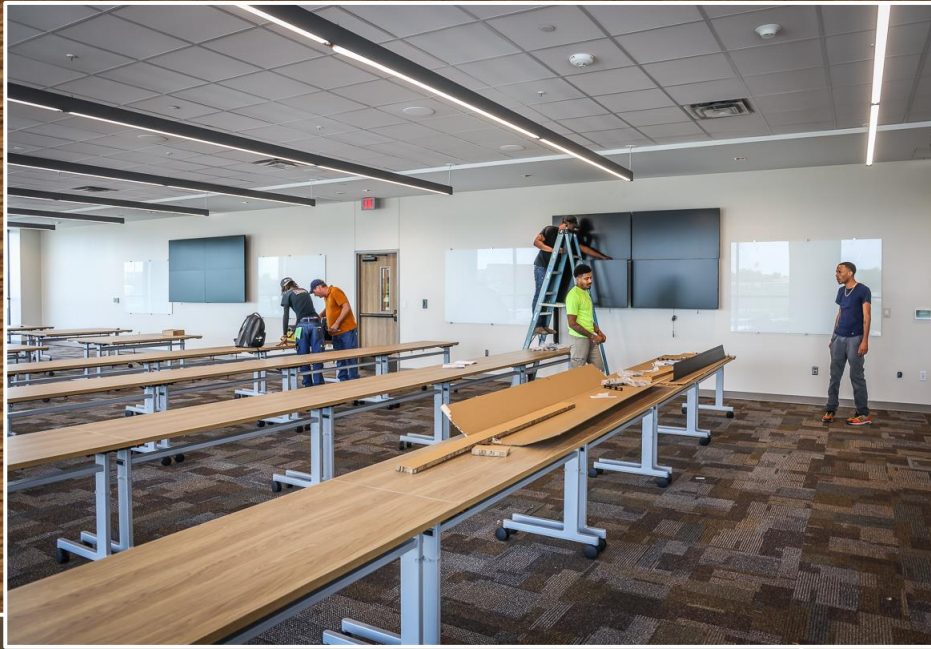




# ADMINISTRATION BUILDING



Work continues on punch items in Area C – employee entrance.



Finishing touches on furniture and installation of monitors in Area B.





**Installation of mill work and finish items in the board room area continues.**



# EAGLE MOUNTAIN HS

Work continues on the main building.





**Work continues on the stadium.**



**Geo well drilling continues on the north side of the property. The first load of steel has arrived on site.**



**Pier work continues on visitor's side of the stadium. Finish grade work continues on home side.**



**CMU block and ICF work progresses in the choir, band hall, and food labs. Slab pour finish work is in progress in the gymnastics area.**





# ELEMENTARY 18



Overview of the site showing the main gymnasium and cafeteria areas.



**Steel installation for the grade beams is in progress.**



## OTHER INFORMATION

- **Elementary 18 – The district has been working with Zonda Demographics on the proposed attendance zone. The plan is to bring it to the Board in October, then present to the community for input.**